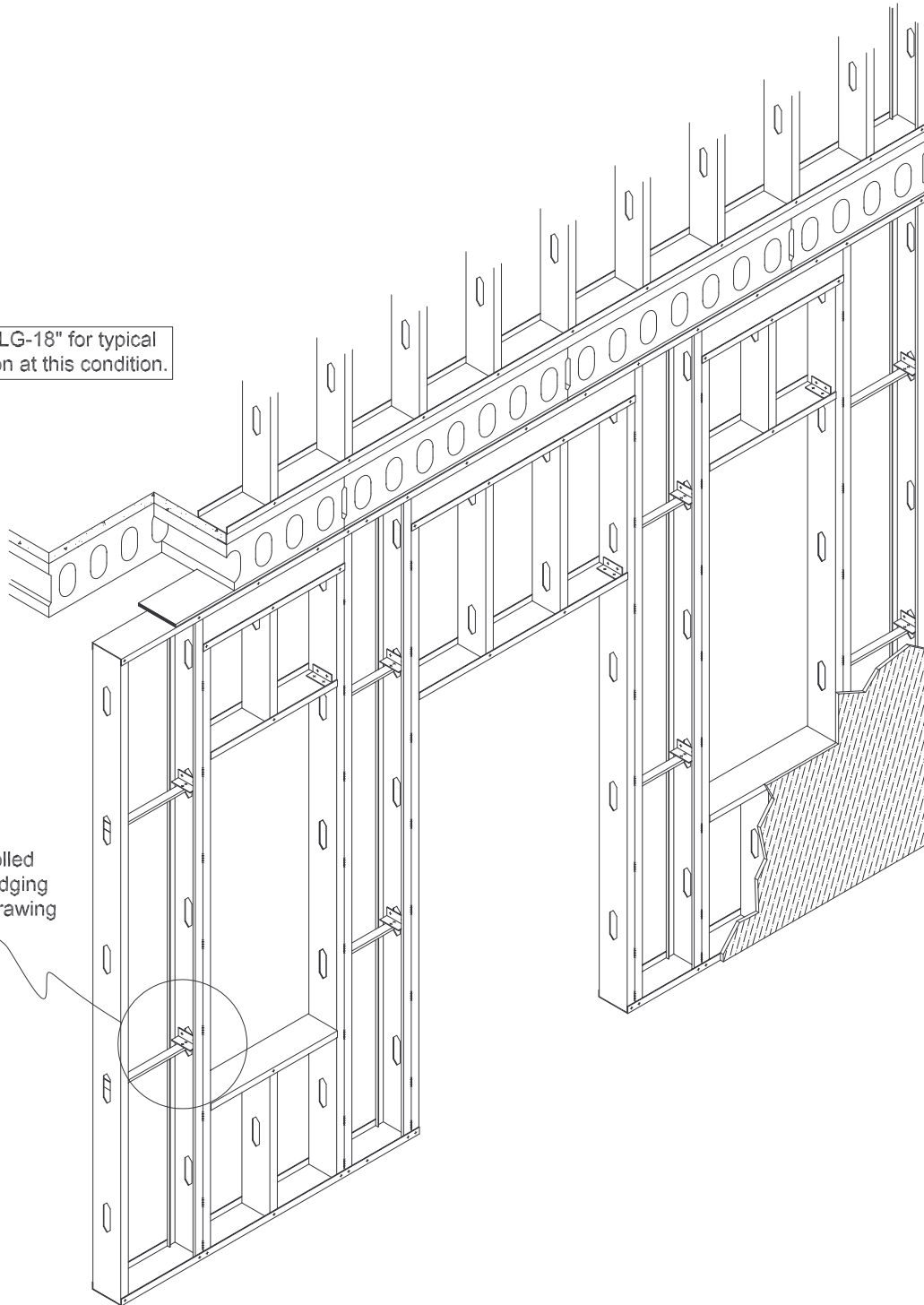


See "LG-18" for typical section at this condition.

See cold-rolled channel bridging isometric drawing "CRC"



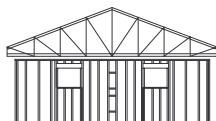
TYPICAL LOAD-BEARING WALL W/ HOLLOW-CORE CONCRETE PLANK

(isometric view)

!!! NOT FOR CONSTRUCTION !!!

Superior Truss & Panel
Incorporated

2204 West 159th Street
Markham, Illinois 60426-9998
Phone: (708) 339-1200 Fax: (708) 339-1248
Web Site: www.superior-truss.com



DRAWING: LG-18

Drawn By: M. Franklin
Scale: 3/8" : 1'-0"
Date: January 17, 2006

RELATED DRAWINGS:
LG-18
CRC