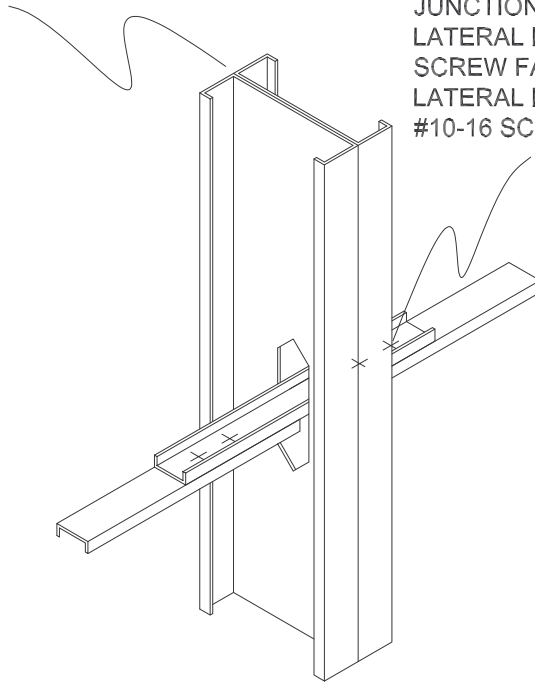


SEE CONNECTION DETAILS
"D1" OR "D2" FOR TYPICAL
PANEL-TO-PANEL CONNECTIONS

1-1/2" CRC SPLICE 1'-0" LONG
CENTERED AT PANEL
JUNCTIONS AT EACH
LATERAL BRACING LOCATION
SCREW FASTENED TO
LATERAL BRACING WITH (4)
#10-16 SCREWS AS SHOWN



!!! NOT FOR CONSTRUCTION !!!

COLD-ROLLED CHANNEL BRIDGING SPLICE DETAIL

Superior Truss & Panel
Incorporated

2204 West 159th Street
Markham, Illinois 60426-9998
Phone: (708) 339-1200 Fax: (708) 339-1248
Web Site: www.superior-truss.com



DRAWING: D3

Drawn By: M. Franklin
Scale: 1 1/2" : 1'-0"
Date: January 17, 2006